

Blueberry Hill

Anthem

Designed by Shannon Dunbabin

Knitting Pattern DK394 - Easy / Intermediate

Sizes:

To fit 13.5" (16", 18.5", 21")

Baby (Toddler, Small Adult, Adult)

Materials:

- Cascade Yarns® Anthem: 100% Acrylic; 100 g (3.5 oz) - 186 yds (170 m); 1 skein color #68 Brilliant Blue
- US 7 & 8 Circular Knitting Needles
- Stitch Marker
- Yarn Needle

Gauge:

18 sts x 24 rows = 4" (10 cm) Ribbed Pattern

Begin Hat:

With US 7 knitting needle, CO 60 (72, 84, 96) sts.

Being careful not to twist stitches, join in the round. PM.

Ribbing:

Work in a K2, P2, ribbing pattern in the round.

Continue for 2" (2.5, 3, 3.5)"

Hat Body:

Change to US 8 knitting needle.

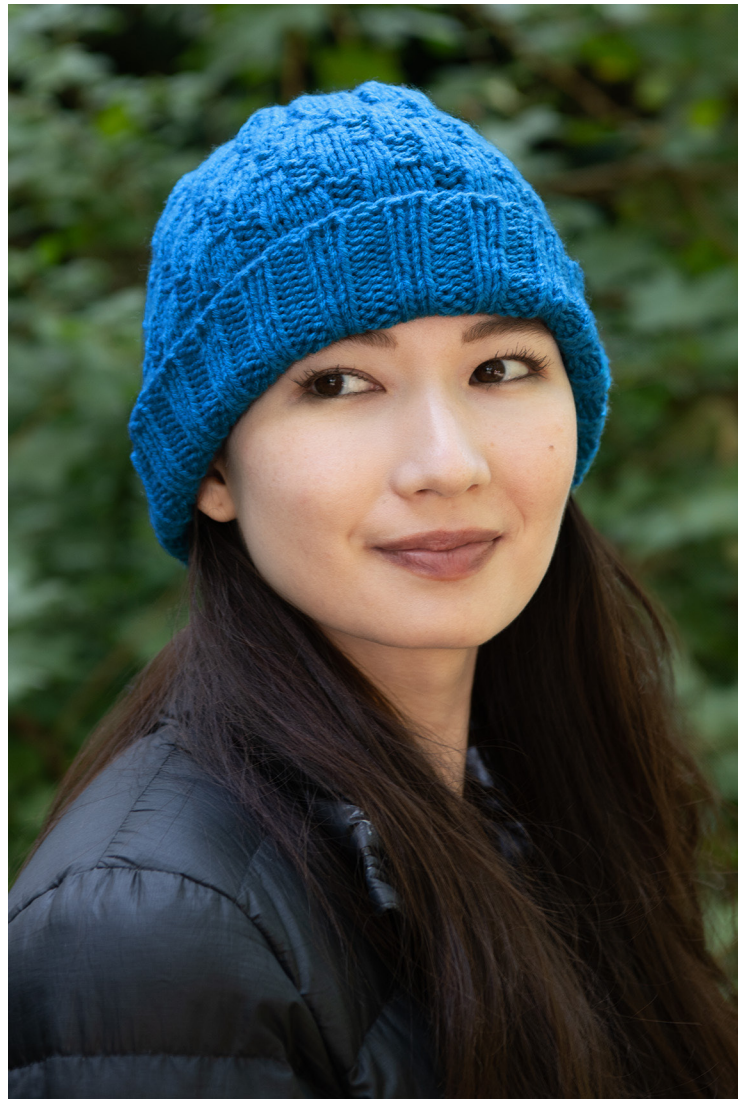
[Knitted in a multiple of 6 sts and 12-row repeat.]

Rnd 1 - 4: *(P2, K4); repeat from * to end. SM

Rnd 5 - 8: K2, *(P2, K4); repeat from * last 4 sts, P2, K2.

Rnd 9 - 12: *(K4, P2); repeat from * to end.

Continue until 6" (7, 8, 9.5)" from cast on edge.



Abbreviations:

BO = Bind Off

CO = Cast On

K = Knit

P = Purl

PM = Place Marker

SM = Slip Marker

K2tog = Knit 2 stitches together

Rnd(s) = Round(s)

St(s) = Stitch(es)



Thank you for downloading our free pattern. Find us online at <https://www.cascadeyarns.com> or on social:



Start Decreases:

Rnd 1: *(K10, K2tog); repeat from * to end of rnd, SM.

Rnd 2: *(K9, K2tog); repeat from * to end of rnd, SM.

Rnd 3: *(K8, K2tog); repeat from * to end of rnd, SM.

Rnd 4: *(K7, K2tog); repeat from * to end of rnd, SM.

Rnd 5: *(K6, K2tog); repeat from * to end of rnd, SM.

Rnd 6: *(K5, K2tog); repeat from * to end of rnd, SM.

Rnd 7: *(K4, K2tog); repeat from * to end of rnd, SM.

Rnd 8: *(K3, K2tog); repeat from * to end of rnd, SM.

Rnd 9: *(K2, K2tog); repeat from * to end of rnd, SM.

Rnd 10: *(K1, K2tog); repeat from * to end of rnd, SM.

Rnd 11: *(K2tog); repeat from * to end of rnd, SM.

Finishing:

Cut yarn, leaving a 12" tail.

Weave through remaining sts and secure on WS of hat.

Weave in ends.

