



FW164

Heritage  
Seamless Hat and Mitts



Designed by Kim Haesemeyer

# Heritage Seamless Hat & Hand Warmers

## Designed by Kim Haesemeyer

The hand warmers of this striking set are worked in the round from the bottom up except for the thumb opening which is shaped by working flat. Easy to customize, simply add or subtract ribbing stitches for desired circumference or ribbing at the top or bottom to adjust the length.

For the hat, the band is worked flat, then the ends are seamed with the three needle bind off. Stitches are then picked up for the crown shaping and worked in the round. Stitches are picked up along the other long edge for ribbing, which is also worked in the round.

### **Sizes**

Hat: 20" circumference, unstretched, to fit 21"-22" head, Length: 7.25"

Hand Warmers: 6.75" circumference, unstretched, to fit 9+" circumference hand,  
Length: 8.25"

*Note:* Hand warmers stretch significantly because of ribbing.

### **Yarn**

Cascade Heritage, 3.5 ounces, 100 grams, 437 yards, 400 meters, 75% superwash merino, 25% nylon, made in Peru, color: #5604, 1 hank for both projects

### **Yardage**

Hat: 165 yards

Hand Warmers: 179 yards

Total Yardage: 344 yards

### **Materials, Hat**

US size 2 (2.75 mm), 16" circular or size needed for gauge

US size 2 (2.75 mm), set of 4 double pointed needles or size needed for gauge

US size 2 (2.75 mm), straight or size needed for gauge.

Waste yarn of similar weight for provisional cast on

3 (5/8") genuine shell buttons

Stitch markers: 1 of color A, 10 of color B

Cable needle

Tapestry needle to weave in ends

### **Materials, Hand Warmers**

US size 2 (2.75 mm), set of 4 double pointed needles or size needed for gauge

1 stitch marker

cable needle

Tapestry needle to weave in ends

### **Gauge**

8 stitches and 11 rows/rnds = 1" in stockinette stitch

19 stitches of chart = 1.5"

10.5 stitches and 11 rows/rnds = 1" in (k1, p1) ribbing, unstretched

## **Pattern Notes**

### *Abbreviations*

BOR = beginning of round

c3l = (cable 3 left) sl 1 st on cn, hold in front, p2 from ln, k1 from cn

c3r = (cable 3 right) sl 2 sts on cn, hold in back, k1 from ln, p2 from cn

c6l = (cable 6 left) sl 3 sts on cn, hold in front, p3 from ln, k3 from cn

c6r = (cable 6 right) sl 3 sts on cn, hold in back, k3 from ln, p3 from cn

cn = cable needle

k = knit

k2tog = knit 2 sts together

m = marker

p = purl

pm = place marker

rem = remain(ing)

rep = repeat

rnd(s) = round(s)

RS = right side

sl = slip, purlwise unless noted

sm = slip marker

St st = stockinette stitch, k on RS, p on WS

st(s) = stitch(es)

t4r = (twist 4 right) sl 3 sts to cn, hold to back, k1 from ln, sl the last 2 sts from cn back to ln, bring rem st on cn to front of work, p2 from ln, k1 from cn.

turn = flip work to opposite side and continue working

WS = wrong side

## **Left Hand Warmer**

With two needles held together and the longtail cast on, cast on 74 sts. Divide sts evenly on 3 needles, place m, join, careful not to twist sts.

### *Bottom Ribbing*

Rnd 1: (K1, p1) 4 times, p1, (k1, p2) 7 times, (k1, p1) 22 times.

Rep Rnd 1 for 1”.

### *Body*

Rnd 1: (K1, p1) 4 times, p1, work Rnd 1 of chart over next 19 sts, p2, (k1, p1) 22 times. Cont working chart, Rnds 2-34, and ribbing as established. Work Rnds 1-12 of chart again. Fabric measures approximately 5.25” from cast on edge.

### *Thumb Opening*

Discontinue working in the rnd. Begin working flat, back and forth for Rows 13-34, working the first 3 sts and last 2 sts in St st as follows:

Row 13: K3, (p1, k1) twice, p2, work Row 13 of chart over next 19 sts, p2, (k1, p1) 21 times to last 2 sts, k2, turn. Remove BOR m.

Row 14: P2, (k1, p1) 21 times, k2, work Row 14 of chart over next 19 sts, k2, (p1, k1) 2 times, p3, turn.

Rows 15-34: Work as established.

Work Row 1 once more.

### *Top Ribbing*

Place BOR m and resume working in the rnd.

Rnd 1: (K1, p1) 4 times, p1, (k1, p2) 7 times, (k1, p1) 22 times.

Rep Rnd 1 for 1". Total fabric will measure approximately 8.25".

Bind off loosely in pattern.

### **Right Hand Warmer**

Work the same as *Left Hand Warmer* until *Thumb Opening*. Work *Thumb Opening* as follows:

### *Thumb Opening*

Discontinue working in the rnd. Begin working flat, back and forth for Rows 13-34, working the first 2 sts and last 3 sts in St st as follows:

Row 13 (RS): (K1, p1) 4 times, p1, work Row 13 of chart over next 19 sts, p1, (p1, k1) 3 times, k2, turn.

Row 14 (WS): P3, (k1, p1) twice, k2, work Row 14 of chart over next 19 sts, k2, (p1, k1) 21 times, p2, turn.

Rows 15-34: Work as established.

Work Row 1 once more.

Join to work in the rnd and work to BOR m as established.

Finish as for *Left Hand Warmer*, resuming with Rnd 1 of *Top Ribbing*.

## **Hat**

*Notes:* Hat band is worked flat and then seamed. Stitches are then picked up along one long edge for the crown shaping. Stitches are picked up along the other long edge for the bottom ribbing. To change the length of the hat, add or subtract length from the bottom ribbing or St st rnds worked before shaping.

### ***Cable Band, Worked Flat***

With straight needles, provisionally cast on 21 sts.

#### *Ribbing*

Row 1 (WS): Purl.

Row 2 (RS): K2, (p2, k1) 6 times, k1.

Row 3 (WS): P2, (k2, p1) 6 times, p1.

Repeat Rows 2 and 3 for two more times, ending with a WS row.

#### *Begin working chart as follows:*

Row 1 (RS): K1, work Row 1 of chart over 19 sts, k1.

Row 2 (WS): P1, work Row 2 of chart over 19 sts, p1.

Continue working chart as established, working entire chart 6 times.

Work Rows 1 and 2 one more time.

#### *Ribbing*

Row 1 (RS): K2, (p2, k1) 6 times, k1.

Row 2 (WS): P2, (k2, p1) 6 times, p1.

Repeat Rows 1 and 2 two more times, ending with a wrong side row. Leave sts on needle.

Unravel stitches on provisional cast on to another needle.

With right sides together, seam with the three needle bind off. Weave in ends with tapestry needle.

### ***Crown***

With 16" circular needles, RS facing, working one st in from the edge, pick up 165 sts evenly around entire band. Place color A marker, join, careful not to twist sts.

Work even in St st for 2.75".

### ***Crown Shaping***

*Note:* Switch to double pointed needles when no longer comfortable to knit with the circular needles.

Rnd 1: \*K13, k2tog, place color B m; rep from \* to end of rnd—154 sts remain.  
Marker A will function as the last shaping marker as well as the beginning of round marker.

Rnd 2: Knit.

Rnd 3: \*K to 2 sts before m, k2tog; rep from \* to end of rnd—11 sts decreased.

Rep Rnds 2 and 3 as established until 11 sts rem. Cut yarn, leaving a long tail to weave in.

Thread tapestry needle with yarn and pull through rem sts, removing st markers. Gather tightly to close and secure end by weaving in on wrong side of hat.

### ***Bottom Ribbing***

With 16" circular needles and one st from the edge on the remaining long edge from the rest of the hat, pick up 164 sts evenly around entire band. Place color A marker, join, being careful not to twist sts.

Rnd 1: \*K1, p1; rep from \* to end of rnd.

Rep Rnd 1 for .5". Bind off loosely in pattern.

### ***Finishing***

Wash, block according to instructions on yarn label. Attach buttons along band seam.

Chart, Worked in the Round

19 sts, 34 rounds

Rnd 1: T4r, (p2, k1) 3 times, p2, t4r.

Rnd 2: (K1, p2) 6 times, k1.

Rnd 3: (K1, p2) 6 times, k1.

Rnd 4: (K1, p2) 6 times, k1.

Rnd 5: T4r, (p2, k1) 3 times, p2, t4r. (rep rnd 1)

Rnd 6: (K1, p2) 6 times, k1.

Rnd 7: (K1, p2) 6 times, k1.

Rnd 8: (K1, p2) 6 times, k1.

Rnd 9: T4r, p2, c3l, k1, c3r, p2, t4r.

Rnd 10: K1, p2, k1, p4, k3, p4, k1, p2, k1.

Rnd 11: K1, p2, k1, p1, c6r, p4, k1, p2, k1.

Rnd 12: K1, p2, k1, p1, k3, p7, k1, p2, k1.

Rnd 13: K1, p2, k1, p1, c6l, p4, k1, p2, k1.

Rnd 14: K1, p2, k1, p4, k3, p4, k1, p2, k1. (rep rnd 10)

Rnd 15: K1, p2, k1, p4, c6l, p1, k1, p2, k1.

Rnd 16: K1, p2, k1, p7, k3, p1, k1, p2, k1.

Rnd 17: K1, p2, k1, p4, c6r, p1, k1, p2, k1.

Rnd 18: K1, p2, k1, 4, k3, p4, k1, p2, k1. (rep rnd 10)

Rnd 19: K1, p2, k1, p1, c6r, p4, k1, p2, k1. (rep rnd 11)

Rnd 20: K1, p2, k1, p1, k3, p7, k1, p2, k1. (rep rnd 12)

Rnd 21: K1, p2, k1, c6l, p4, k1, p2, k1. (rep rnd 13)

Rnd 22: K2, p2, k1, p4, k3, p4, k1, p2, k1. (rep rnd 14)

Rnd 23: K1, p2, k1, p4, c6l, p1, k1, p2, k1. (rep rnd 15)

Rnd 24: K1, p2, k1, p7, k3, p1, k1, p2, k1. (rep rnd 16)

Rnd 25: K1, p2, k1, p4, c6r, p1, k1, p2, k1. (rep rnd 17)

Rnd 26: K1, p2, k1, p4, k3, p4, k1, p2, k1. (rep rnd 10)

Rnd 27: T4r, p2, c3r, k1, c3l, p2, t4r.

Rnd 28: (K1, p2) 6 times, k1.

Rnd 29: (K1, p2) 6 times, k1.

Rnd 30: (K1, p2) 6 times, k1.

Rnd 31: T4r, (p2, k1) 3 times, p2, t4r. (rep rnd 1)

Rnd 32: (K1, p2) 6 times, k1.

Rnd 33: (K1, p2) 6 times, k1.

Rnd 34: (K1, p2) 6 times, k1.

Chart, Worked Flat

19 sts, 34 rows

Row 15 (RS): K1, p2, k1, p4, c6l, p1, k1, p2, k1.

Row 16: P1, k2, p1, k1, p3, k7, p1, k2, p1.

Row 17: K1, p2, k1, p4, c6r, p1, k1, p2, k1.

Row 18: P1, k2, p1, k4, p3, k4, p1, k2, p1.

Row 19: K1, p2, k1, p1, c6r, p4, k1, p2, k1.

Row 20: P1, k2, p1, k7, p3, k1, p1, k2, p1.

Row 21: K1, p2, k1, c6l, p4, k1, p2, k1.

Row 22: P1, k2, p1, k4, p3, k4, p1, k2, p1.

Row 23: K1, p2, k1, p4, c6l, p1, k1, p2, k1.

Row 24: P1, k2, p1, k1, p3, k7, p1, k2, p1.

Row 25: K1, p2, k1, p4, c6r, p1, k1, p2, k1.

Row 26: P1, k2, p1, k4, p3, k4, p1, k2, p1.

Row 27: t4r, p2, c3r, k1, c3l, p2, t4r.

Row 28: (P1, k2) 6 times, p1.

Row 29: (K1, p2) 6 times, k1.

Row 30: (P1, k2) 6 times, p1.

Row 31: t4r, (p2, k1) 3 times, p2, t4r.

Row 32: (P1, k2) 6 times, p1.

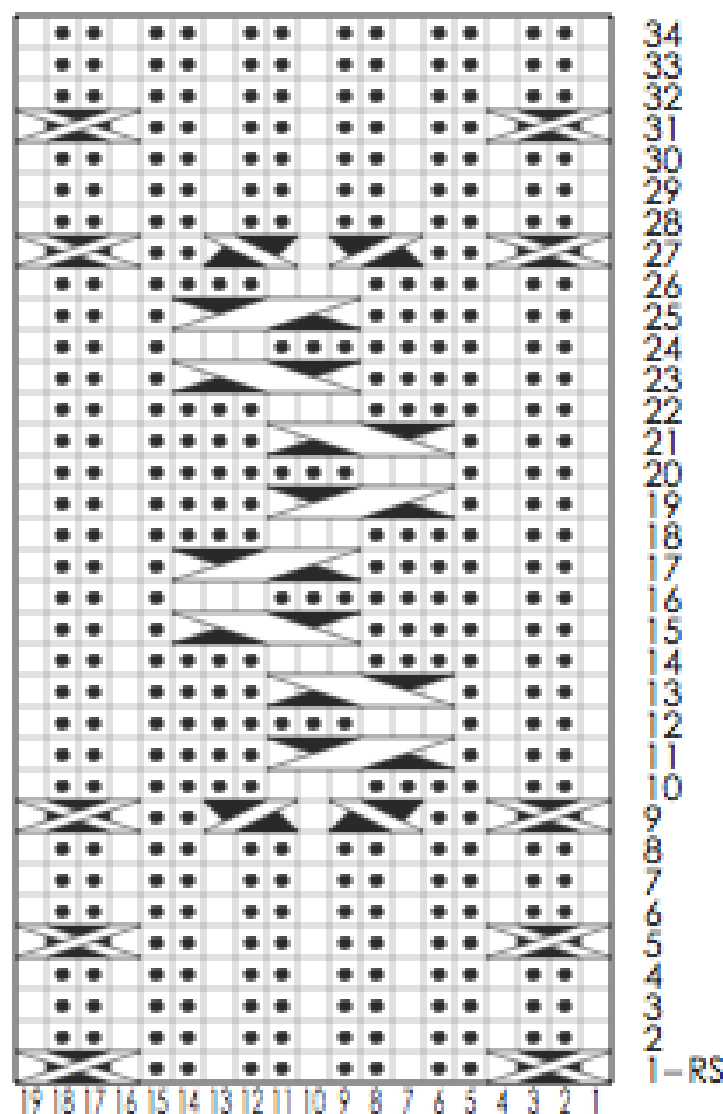
Row 33: (K1, p2) 6 times, k1.






Row 34: (P1, k2) 6 times, p1.

Row 1: T4r, (p2, k1) 3 times, p2, t4r.



**Chart**  
(panel of 19 sts; 34 rnd rep)



- Knit on RS, purl on WS
- purl on RS, knit on WS
-  Cable 3 Left (c3l) - Sl 1 st on cn, hold in front, p2 from ln, k1 from cn
-  Cable 3 Right (c3r) - Sl 2 sts on cn, hold in back, k1 from ln, p2 from cn.
-  Cable 6 Left (c6l) - Sl 3 sts on cn, hold in front, p3 from ln, k3 from cn.
-  Cable 6 Right (c6r) - Sl 3 sts on cn, hold in back, k3 from ln, p3 from cn
-  Twist 4 Right (t4r) - Sl 3 sts to cn, hold to back, k1 from ln, sl the last 2 sts from cn, back to ln, bring rem st on cn to front of work, p2 from ln, k1 from cn.